

Participant information for QUT research project

– Co-design Workshops –

Title of Research Project

Evolution of Disability Arts in Australia

QUT Ethics Approval Number 2021000382



Why are we doing this research?



The quality of Australian disability arts practice is recognised around the world. There is, however, no collection of texts, images, videos and other historical materials documenting this excellent art and media practice. This research project aims to create the first online archive collecting this type of material, for artists, allies, students, researchers and policy makers.

The project team will do this by

- Collecting records of past and present disability arts practices from organisations
- Interviewing artists, arts workers, allies and other people involved in disability arts practices
- Inviting artists, arts workers, allies, and other people involved in disability arts practices to take part in a workshop, to discuss and collaborate on ideas for the design of the website presenting the collected materials to the public.

The research hopes to create a culturally respectful website, to help artists, arts organisations, scholars and government to make decisions about disability arts policy, programming, and funding in the future.

We are looking for arts and media workers, archivists, and other people over 18 years of age who have been involved in disability arts in Australia to take part in this research, and we would like to invite you to participate.

How to be involved?

You will be invited to participate in the workshop to co-design the website presenting the materials collected for the archive of disability arts in Australia.

The workshop will take three hours, and the in person workshops will be held in three locations –

- Queensland University of Technology, Brisbane;
- Access Arts Victoria, Melbourne or;
- Curtin University, Perth.

There will also be an online workshop, which will take place via Zoom, for those who are not able to attend in Brisbane, Melbourne, or Perth, or would prefer to engage online.

Each co-design workshop will have 10 – 15 participants led by 3 facilitators.

- You will be invited to take part in conversations, creative activities, and reflection tasks.
- You will be invited to share your thoughts, experiences, ideas, and needs when engaging with a website such as the planned website presenting texts, images, videos and other historical materials documenting disability arts practice in Australia.
- You will be invited to share your ideas about the best way to categorise, label, describe and display archival materials on such a website.
- There will be a video to watch prior to coming to the workshop.

The research team will audio record, video record, and take photographs of activities during the workshop.

- The research team will use the audio and video recordings to document the recommendations participants make about how to design the planned website presenting the archival materials.
- The research team will, with participants' consent, use the still photographs in publications and promotional materials telling people about the archive of disability arts in Australia, and in the online archive itself.

Everything you do in this project is completely voluntary. You can change your mind and decide not to participate in the project at any time before or during the workshops. There is no need to tell us why. However if you change your mind, it will not be possible for us to remove photographs, video recordings or audio recordings of you participating in the workshops. Your decision to participate will have no effect on your current or future relationship with QUT – for example your grades if you are a student, or your future employment at QUT, Curtin University, Melbourne University, or Arts Access Victoria, if you are a scholar or arts worker.

Access

The research team understands that people who would like to participate in this project may have access requirements. This may include an Auslan Interpreter, computerised translation, or other forms of support.

The research team also recognises that people who identify as Aboriginal and Torres Strait Islander people, or people from culturally or linguistically diverse background, may also require interpreters and support workers who are able to provide support in an appropriate language and cultural framework.

The research team encourages people who would like to participate in this project to let us know their disability and/or cultural access requirements when they let us know they would like to take part in the project. The research team will work with you to support your participation.

Why be involved?

The decision to participate in this research project may benefit you if you would like to work with other members of the disability arts community to talk about how past and present practice might best be represented in an online archive. The project may also benefit researchers, arts organisations, and government, by helping them to understanding the work of disability arts practitioners in Australia.

If you choose to participate in this research, the research team will acknowledge your participation by offering you an honorarium, in the form of a \$100 gift card, for example a \$100 Woolworths or Coles gift card.

If you would like to receive a copy of the publications at the end of this research, you can let us know. If you change your address or phone number between the time of the co-design workshop and the end of the research, you can send updated details to the research team.

What are the risks?

Your participation in this research project might involve some risk of experiencing some uncomfortable feelings you would not otherwise experience in your normal day-to-day life. In co-design workshops, you may find you do not agree with ideas put forward by other participants, or they do not agree with ideas you put forward.

This potential for disagreement will be managed by workshop facilitators, to make sure conversations and creative activities are respectful and safe. You are also welcome to take a break or leave the workshop at any time. If you would like support to discuss ideas that have come up, one of the three facilitators will be able to come out of the workshop into a designated 'break out' space – a physical space, or an online break out room – and discuss this with you at any time.

Because this will be a workshop with 10 to 15 participants, it will not be possible to request changes to audio recording, video recording, or still photographs after the co-design workshop. Audio and video recording will only be used by the research team to document the ideas for the archive. Still photographs will, with your consent, be used in publications and promotions to tell people about the research and in the online archive itself.

Emotional or mental health support

QUT provides for limited free psychology, family therapy or counselling services for QUT research participants. If you experience any discomfort or distress during the research, you can use these services. To access this service please call QUT Psychology and Counselling Clinic and tell them you are a research participant.

QUT Psychology and Counselling Clinic

Receptionist Phone: 07 3138 0999 (voice only)

Open Hours: Monday–Friday only 9am–5pm

Address: 44 Musk Avenue, Kelvin Grove

Other services

Lifeline



Online, phone or face-to-face support Phone: 13 11 14 for 24-hour telephone crisis support

Phone

Kids Helpline

Support for people aged 25 and younger

Phone: 1800 551 800 for 24-hour telephone crisis support

Privacy and Confidentiality

The research team will make sure audio recordings, video recordings, photographs, and other data collected as part of this research are stored in a secure online drive according to QUT's Research Data Management Policy.

This data will be stored for at least 5 years.

The data can be disclosed to other people or organisations if it is required by law, or if it is required to protect you as a participant from harm.

The data – with all names, images, and other identifying features removed, so it is not possible to identify individual people – may also be made available to other researchers and research projects studying the work of d/Deaf, disabled, and neurodiverse artists.

The research project is funded by the Australian Research Council, they will not have access to the data collected during the project. This research project is also funded by the Australia Council for the Arts, and they will have access to the data collected during the project.

Consent

We would like to ask you to sign a written consent form (enclosed) to confirm your agreement to participate.

More info

If you have any questions or require further information, please contact one of the listed researchers:

Chief Investigator: Bree Hadley: bree.hadley@qut.edu.au

Concerns and Complaints

QUT is committed to research integrity and the ethical conduct of research projects.

If you wish to discuss the study with someone not directly involved, particularly in relation to matters concerning policies, information or complaints about the conduct of the study or your rights as a participant, you may contact the QUT Research Ethics Advisory Team on 07 3138 5123 or email humanethics@qut.edu.au.

The Research Team

The lead chief investigators are below:



Professor Bree Hadley
 Chief Investigator
 Qld University of Technology
bree.hadley@qut.edu.au



Prof Kathleen Ellis
 Chief Investigator
 Curtin University
katie.ellis@curtin.edu.au



A/Prof Edward Paterson
 Chief Investigator
 The University of Melbourne
eddiep@unimelb.edu.au



A/Prof Janice Rieger
 Chief Investigator
 QUT
j.rieger@qut.edu.au

More of the research team members:



Dr Christen Cornell
 Partner Investigator
 Australia Council for the Arts
c.cornell@australiacouncil.gov.au



Ms Caroline Bowditch
 Partner Investigator
 Arts Access Victoria
cbowditch@artsaccess.com.au

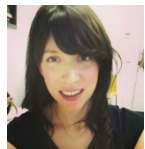


Ms Caitlin Vaughan
 Partner Investigator
 Australia Council for the Arts



Ms Annie Rolfe
 Research Assistant
 QUT
a2.rolfe@qut.edu.au

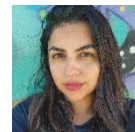
c.vaughan@australiacouncil.gov.au



Ms Erin Scudder
 Research Assistant
 The University of Melbourne
erin.scudder@unimelb.qut.edu.au



Ms Hannah Mason
 Research
 QUT
Hannahleigh.mason@qut.edu.au



Ms Saadia Ahmed
 Research Assistant
 Curtin University
saadia.ahmed@curtin.edu.au